



**HTA INVERTER DUTY FIRE PUMP SERIES**

# TEFC "FIRE PUMP" SERIES

BMR USA VHS series has been approved for fire pump applications. Our vertical motors are comprised of Class H materials that are suitable for nearly all applications. BMR USA now has the NFPA 20 rating which protects life and property by providing requirements for the selection and installation of pumps to ensure that systems will work as intended to deliver adequate and reliable water supplies in a fire emergency.

**HORSEPOWER RANGES: 15HP-250HP**

**SPEEDS: 1800**

**DESIGN VOLTAGES: THREE PHASE 230, 460 60HZ**

**ENCLOSURES: TEFC**

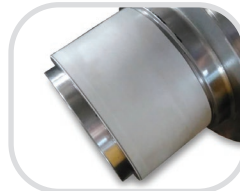
**EFFICIENCY LEVELS: PREMIUM**

**SHAFT TYPES: HOLLOW AND SOLID**

## PREMIUM PRODUCT FEATURES AS STANDARD

### CERAMIC COATED THRUST BEARING MOUNT

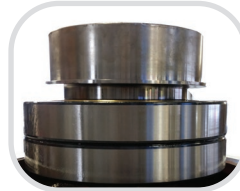
Insulates electric current to prevent fluting in thrust bearings



### DOUBLE STACK ANGULAR CONTACT BEARINGS

(100HP -500HP)

BMR USA double stacks oversized 40 degree angular contact bearings to allow the motor to run on 175% EHT applications



### GUIDE BEARING PROTECTION RINGS 100HP-250HP

Lower brush grounding rings are installed to conduct shaft currents to the motors ground and doesn't allow the electrical current from entering the lower bearing causing premature bearing failure



## OTHER PREMIUM FEATURES INCLUDE:

- Comprised of Class H materials
- 120V Space heaters
- 50 degree ambient rated
- Deep set oil bath lubrication system
- Durable lifting arms
- U.L approved insulation system
- Double VPI treatment with non hydroscopic epoxy varnish
- All Stainless Steel Nameplate with full data
- Twist Spigot Oil Drain
- Oversized one piece sight glass
- 12 Ball "Ball Type" non reverse ratchet
- Handle Grip Oil fill plug
- Deep grooved cooling fin design
- Steel canopy cap drip cover
- Quad Cooling fin design

